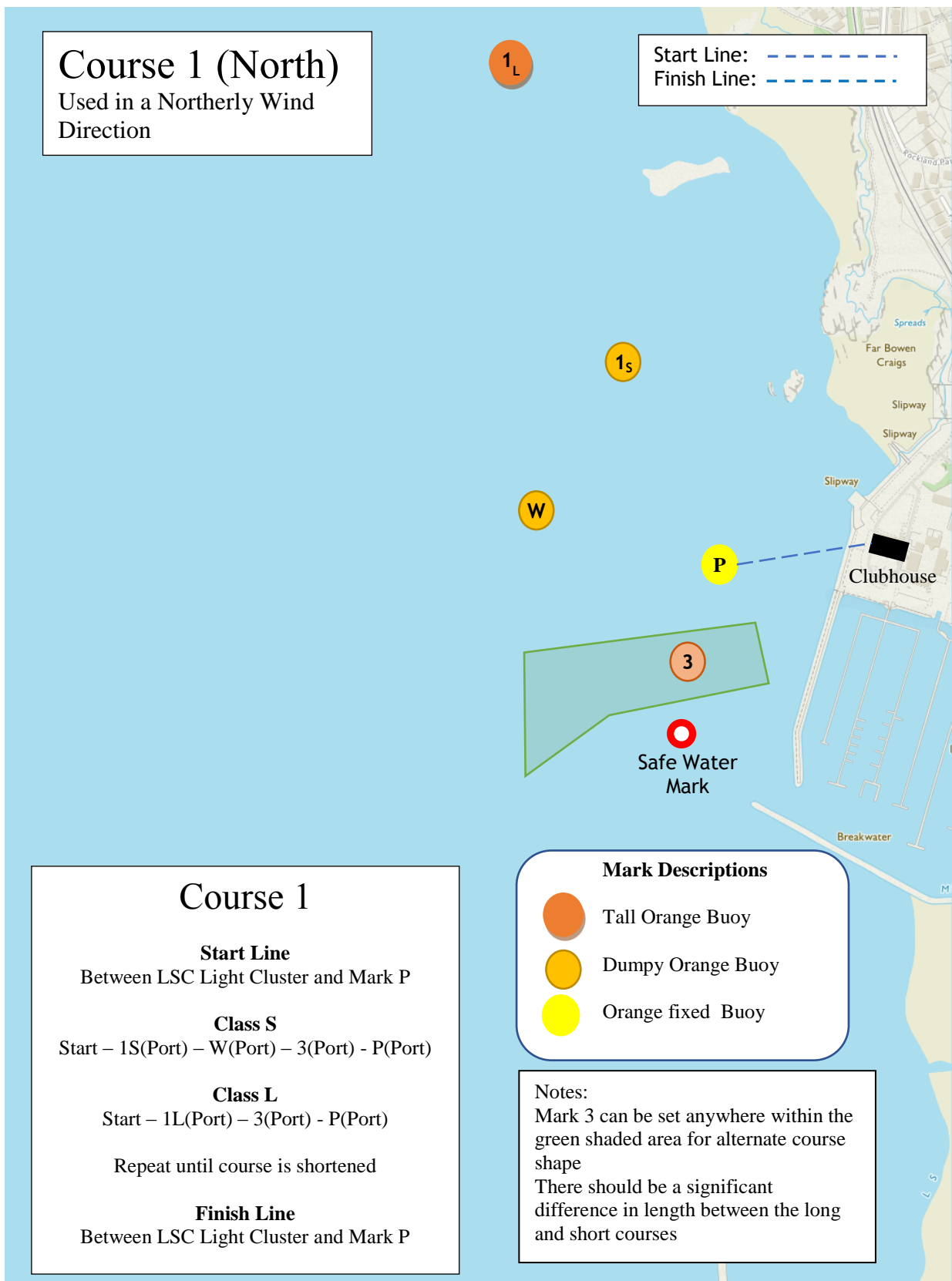


# Appendix 1 Course Charts



## Course 2 (South)

Used in a Southerly Wind Direction

### Course 2

#### Start Line

Between LSC Light Cluster and Mark P

#### Class S

Start - 1S(Stb) - W(Stb) - 3(Stb) - P(Stb)

#### Class L




Start - 1L(Stb) - 3(Stb) - P(Stb)

Repeat until course is shortened

#### Finish Line

Between LSC Light Cluster and Mark P

#### Mark Descriptions



-  Tall Orange Buoy
-  Dumpy Orange Buoy
-  Orange Fixed Buoy

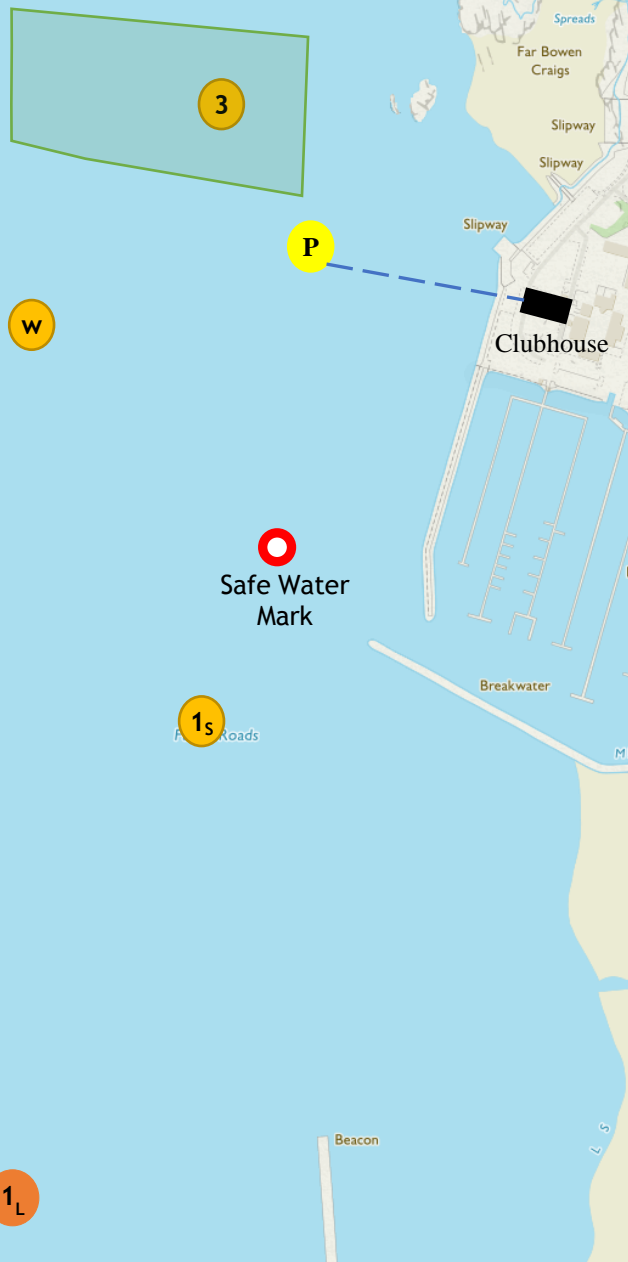
#### Notes:

This course should only be used where course 3 or 4 are not possible by wind direction.

Mark 3 can be set anywhere within the green shaded area for alternate course shape


There should be a significant difference in length between the long and short courses

Start Line:  ---  
Finish Line:  ---






## Course 3 (East)

Use from a North East to South East wind direction

Start Line:   
Finish Line: 

### Mark Descriptions

-  Tall Orange Buoy
-  Dumpy Orange Buoy
-  Orange Fixed Buoy

1<sub>L</sub>

1<sub>S</sub>

W

P

3

  
Safe Water  
Mark

Clubhouse

## Course 3

### Start Line

Between Mark 3 and Mark P

### Class S

Start - W(Port) - 1S(Port) - 3(Port) - P(Port)

### Class L

Start - 1L(Port) - 3(Port) - P(Port)

Repeat until course is shortened

### Finish Line

Between LSC Light Cluster and Mark P



### Notes:

This course is preferred over Course 2 and should be used where possible.

There should be a significant difference in length between the long and short courses

## Course 4 (West)

Used from a North Westerly,  
to a South Westerly

Start Line:   
Finish Line: 

1<sub>L</sub>

1<sub>S</sub>

W

P

3

  
Safe Water  
Mark

Clubhouse

## Course 4

### Start Line

Between Mark 3 and Mark P

### Class S

Start – 1S(Port) – W(Port) – 3(Port) – P(Port)

### Class L




Start – 1L(Port) – 3(Port) – P(Port)

Repeat until course is shortened

### Finish Line

Between LSC Light Cluster and Mark P

### Mark Descriptions

-  Tall Orange Buoy
-  Dumpy Orange Buoy
-  Orange Fixed Buoy

### Notes:

This course is preferred over Course 2  
and should be used where possible.

There should be a significant  
difference in length between the long  
and short courses